

# HN65S

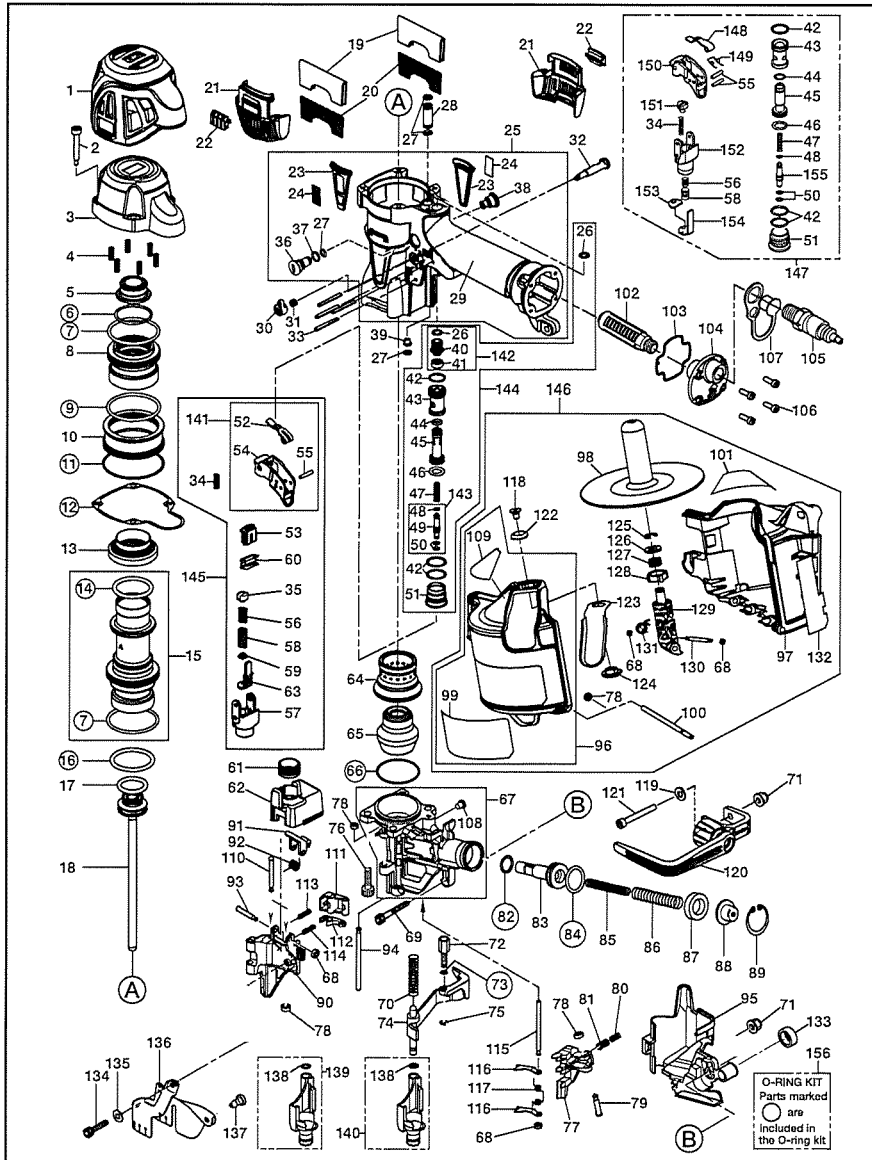
EXPLODED  
VIEW AND SPARE  
PARTS LIST

SCHEMA ECLATE ET  
LISTE DES PIÉCES  
DE RECHANGE

DESPIECE DE LA  
MAQUINA Y LISTA  
DE RECAMBIOS

EINZELTEILDAR-  
STELLUNG UND  
ERSATZTEILLISTE

ESPLOSO DEI  
COMPONENTI ED  
ELENCO DELLE  
PARTI DI RICAMBIO



No.	Code	Description
1	HN12517	CYLINDER CAP PROTECTOR
2	HN10338	SCREW 5X36
3	HN12764	CYLINDER CAP
4	KK23650	COMP. SPRING 3650
5	HN11364	PISTON STOP
6	HH19752	O-RING 1A 2X31
7	HH11136	O-RING ARP568-132
8	HN11396	HEAD VALVE PISTON
9	HH14906	O-RING AS 568-133
10	HN12128	HEAD VALVE GUIDE
11	HH14904	O-RING AS 568-032
12	HN11363	CYLINDER CAP SEAL
13	HN11370	CYLINDER SEAL
14	HH11135	O-RING AP31.5
15	HN81140	CYLINDER A ASSY
16	HH11174	O-RING 1A P35
17	HH11805	O-RING P22A
18	HN70507	MAIN PISTON UNIT
19	HN11376	FILTER B
20	HN11375	FILTER A
21	HN12054	EXHAUST COVER
22	HA11009	FIXING PLATE
23	HN12115	NAME RUBBER
24	PJ11961	NAME PLATE
25	HN81500	BODY UNIT
26	HH19127	O-RING A 1.5X5.5
27	HH19722	O-RING A1.5X5
28	HN11442	PIPE
29	HN12248	GRIP COVER
30	HN12123	TRIGGER LOCK DIAL
31	KK23507	SPRING 3507
32	CN35075	TRIGGER LOCK LEVER
33	FF21235	SPRING PIN 3X30
34	KK23129	COMPRESSION SPRING 3129
35	HN12370	ARM GUIDE PIN
36	HA18698	DUSTER STOPPER
37	HH19772	O-RING 1A 1.5X7.5
38	HN12742	BLIND CAP
39	HN10820	FEED NOZZLE
40	HN10043	PILOT CAP
41	HN10018	PILOT SEAL
42	HH12105	O-RING 1A 1.5 X 12.8
43	HN10016	TRIGGER VALVE HOUSING
44	HH11208	O-RING BP6
45	HN10017	PILOT VALVE
46	HH11132	O-RING 1AP10A
47	KK23619	COMP. SPRING 3619
48	HH19707	O-RING A1.4X2.5
49	HN10353	TRIGGER VALVE STEM
50	HH19214	O-RING 1B 1.5X3
51	HN12172	TRIGGER VALVE CAP
52	CN35115	CONTACT LEVER A
53	HN12170	SWITCH LEVER A
54	HN10354	TRIGGER
55	FF22402	SPRING PIN 3X16
56	KK23735	COMP. SPRING 3735
57	HN10355	ARM GUIDE
58	KK23736	COMP. SPRING 3736

59	HN10785	CONTACT BUMPER
60	CN34500	SPRING, LEVER
61	HN10026	ADJUST DIAL
62	HN11389	ADJUST SPACER
63	HN12664	CONTACT ARM A
64	HN12089	CYLINDER B
65	HN12090	BUMPER
66	HH14164	O-RING AS 568-030
67	HN81127	NOSE UNIT
68	EE39609	RUBBER WASHER 1.8X6X2
69	BB40407	BOLT 5 X 20
70	KK29173	COMP. SPRING 9173
71	CC00401	ELASTIC STOP NUT M5
72	HN12405	CONTACT BOLT
73	HH11903	O-RING 1A 1.2 X 4
74	HN70111	CONTACT ARM B UNIT
75	JJ80010	E-RING 3.2
76	BB40213	BOLT 6 X 25
77	HN11462	FEED PAWL
78	EE39625	WASHER 7
79	FF41817	STEP PIN 1817
80	KK23788	COMP. SPRING 3788
81	KK23710	COMP. SPRING 3710
82	HH11113	O-RING AP9
83	HN11390	FEED PISTON
84	HH11106	O-RING AP16
85	KK23724	COMP. SPRING 3724
86	KK23173	SPRING 3173
87	CN37998	FEED PISTON STOP
88	CN37995	SPRING COLLER
89	JJ22408	C-RING 24
90	HN11382	DOOR
91	HN11405	DOOR LUTCH
92	KK33353	SPRING 3353
93	FF41599	PIN 1599
94	FF31250	STRAIGHT PIN 1250
95	HN11385	ARM COVER
96	HN81508	MAGAZINE CAP ASSY
97	HN12047	MAGAZINE
98	CN38159	NAIL SUPPORT
99	HN12768	MODEL NAME LABEL
100	HN12098	STRAIGHT PIN(MAGAZINE HINGE)
101	HN12464	WARNING LABEL
102	TA17024	FILTER A
103	HN12070	END CAP SEAL
104	HA18729	END CAP
105	HN70264	AIR PLUG H-FPM
106	BB40704	BOLT 4X12
107	HN10316	END PLUG CAP
108	HN81013	MAGNET UNIT
109	HN12769	WARNING LABEL ISO
110	FF41281	PIN 1281
111	HN11463	RATCHET A
112	CN34479	RATCHET B
113	KK23912	COMP. SPRING 3912
114	KK23282	COM. SPRING 3282
115	FF31602	PIN 1602
116	HN11984	CHECK PAWL
117	KK33221	TORSION SPRING 3221

118	HN12079	HEXAGON SOCKET COUNTERSUNK HEAD SCREW 5X8
119	EE31121	WASHER 1-5 (BLACK)
120	HN70292	HOOK ASSY
121	BB40492	T-BOLT 5X42
122	HN12081	COUNTERSUNK WASHER 5
123	HN12062	PRESSER
124	HN12063	PRESSER NUT
125	CN38165	RETAINING RINGS 6
126	CN38161	PLANE WASHER 8
127	CN38164	COMPRESSION SPRING 8164
128	CN38163	BASE DIAL
129	HN12057	NAIL POST
130	FF31642	PIN 1642
131	HN12099	TORSION SPRING 2099
132	HN12770	NAILSUPPORT SWITCH LABEL
133	HN10805	CONTACT TIP
134	BB40427	T-BOLT 4 X 8(REPLACES TA15544)
135	EE39172	WASHER 5.1X12X1.2
136	HN11386	DUST COVER
137	CN31083	HOOK, DUST COVER
138	EE39622	WASHER 5X7.7X2.9
139	HN81108	CONTACT NOSE N ASSY
140	HN81107	CONTACT NOSE V ASSY
141	HN80077	TRIGGER ASSY
142	HN81216	PILOT CAP ASSY
143	HN81248	TRIGGER VALVE STEM ASSY
144	HN81506	TRIGGER VALVE KIT ASSY
145	HN81507	ARM GUIDE KIT
146	HN81509	MAGAZINE ASSY
147	HN81240	SEQUENTIAL TRIP KIT
148	HN10100	CONTACT LVER
149	KK33300	SPRING 3300
150	HN10403	TRIGGER
151	HN11420	ARM GUIDE PIN
152	HN11418	ARM GUIDE
153	HN10357	CONTACT BUMPER
154	HN11435	CONTACT ARM A
155	HN11436	TRIGGER VALVE STEM
156	HN81501	O-RING KIT
	HN70522	CARRYING CASE ASSY
	TA81014	PIN KIT ASSY