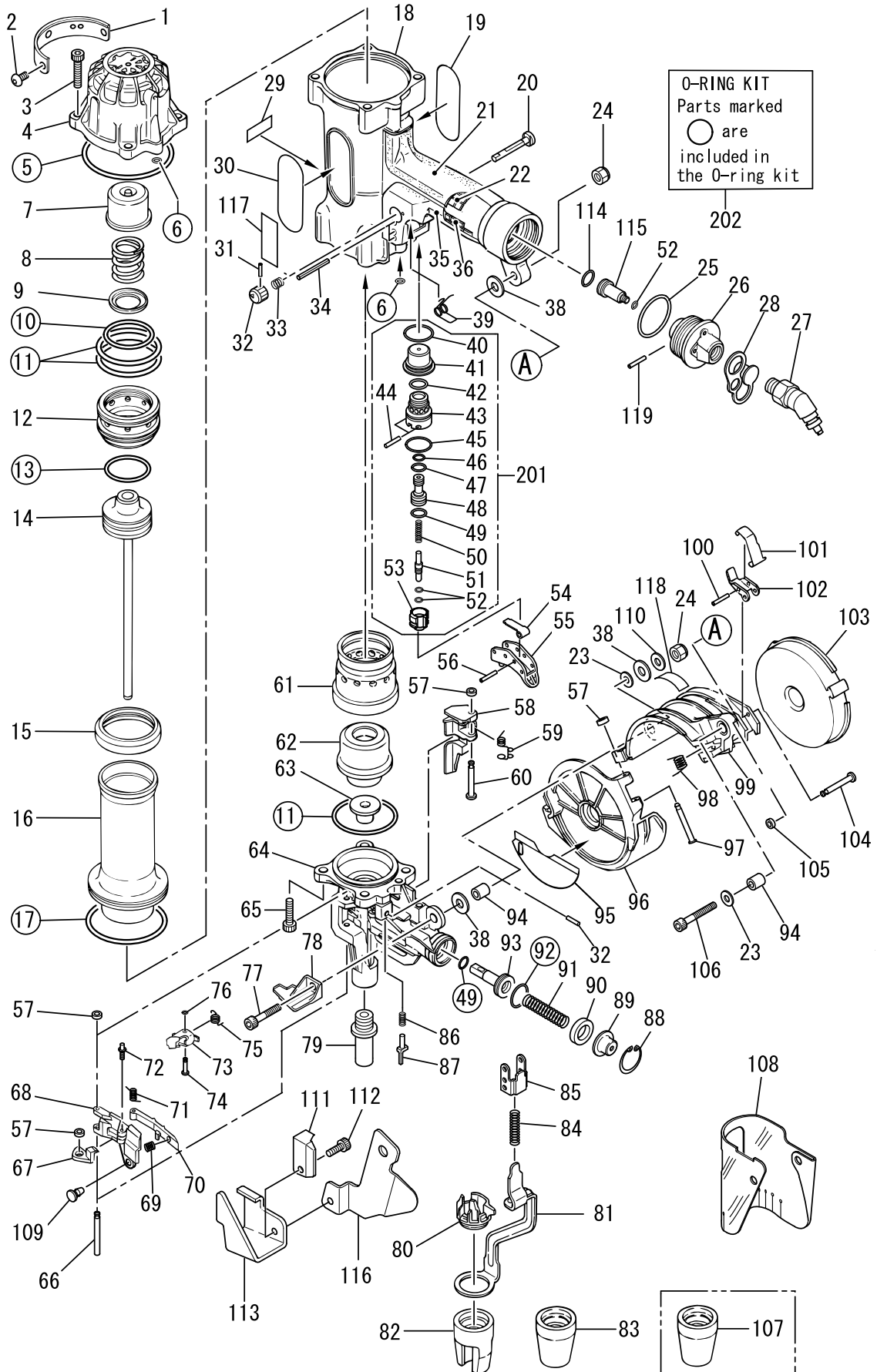


HN120



HN120 (CE) - Parts List

Part No.	Part Code	Description
1	HN10325	EXHAUST COVER
2	BB41701	SPECIAL SCREW M6X8
3	BB40227	SCREW 6X35
4	HN70095	CYLINDER CAP UNIT
5	HH14040	O-RING ARP568-040
6	HH11120	O-RING ARP568-009 CN65079
7	HN10275	PISTON STOP
8	KK23516	COMP SPRING 3516
9	CN31892	SPRING SHEET
10	HH19708	O-RING 1AP2.6X39.5
11	HH11157	O-RING ARP568-136 850006
12	HN10274	HEAD VALVE PISTON
13	HH11803	O-RING P36
14	HN10279	MAIN PISTON UNIT
15	HN10278	CYLINDER SEAL
16	HN10276	CYLINDER A
17	HH12108	O-RING AG60(FORMER HH12114)
18	HN10271	HN81025 REPLACED BODY
19	HN10755	CAUTION LABEL
20	CN34088	TRIGGER LOCK LEVER
21	HN10310	GRIP COVER A
22	HN10322	BUFFER SEAT A
23	EE31105	PLAIN WASHER 1-6
24	CC00402	NUT M6
25	HH12118	O RING 1AG35
26	HN10313	END CAP
27	TT05425	AIR PLUG H-FPM
28	HN10316	END PLUG CAP
29	CN34309	PLASTIC SHEET LABEL (100421)
30	HN10756	NAME LABEL (HN120CE)
31	FF21201	PIN 2.5X10
32	HN10327	TRIGGER LOCK DIAL
33	KK23507	SPRING 3507
34	FF21235	SPRING PIN 3X30
35	HN10311	GRIP COVER B
36	HN10323	NOSE BODY NUT
38	HH21002	SEAL 002(REPLACES TA15262)
39	KK33189	TORSION SPRING 3189
40	HH11159	O-RING ARP568-016 86459
41	HN10326	TRIGGER VALVE CAGE
42	HH11151	O-RING ARP568-013 N10067
43	HN10283	TRIGGER VALVE HOUSING
44	FF30161	PIN 161
45	HH11138	O-RING AP20
46	HH11119	O-RING AP6 N10027
47	HH11802	O-RING P7
48	CN33627	PILOT VALVE
49	HH11113	O-RING AP9 N5528
50	KK23129	COMPRESSION SPRING 3129
51	HN10328	TRIGGER VALVE STEM
52	HH11901	O-RING 1.4 X 2.5 CN65020
53	HN10284	TRIGGER VALVE CAP
54	HN10286	CONTACT LEVER
55	HN81029	TRIGGER UNIT
56	FF22402	SPRING PIN 3X16 (LIGHT LOAD)
57	EE39602	WASHER 7
58	HN10300	FEED PAWL
59	KK33190	SPRING 3190
60	FF41598	PIN 1598
61	HN10277	CYLINDER B
62	HN10282	BUMPER
63	HN10296	DRIVER GUIDE

64	HN10294	NOSE UNIT
65	BB40444	M8 X 30 HSHC SCREW
66	FF31261	PIN 1261
67	HN10302	DOOR PLATE
68	HN10301	DOOR
69	KK23376	COM. SPRING 3376
70	CT10191	SWITCH BAR
71	KK33090	COIL SPRING 3090
72	FF42214	PIN 2214(REPLACES FF42127)
73	HN10303	DOOR LEVER
74	FF41528	STEP PIN 1528
75	KK33197	SPRING 3197
76	CT10226	LEVER HOLDING RUBBER
77	BB40457	BOLT 6X38 FOR CC00402)(REPLACES BB40469)
78	HN10309	NAIL GUIDE
79	HN10297	NOSE TIP
80	HN10213	FEED FINGER RETIANER
81	HN10289	CONTACT ARM UNIT
82	HN10292	ATTACHMENT A
83	HN10293	ATTACHMENT B
84	KK23256	COMPRESSION SPRING 3256
85	HN10287	ARM GUIDE UNIT
86	KK24072	COMP. SPRING 4072
87	HN10304	DOOR OPENING-CLOSING FINGER
88	JJ22408	C-RING 24
89	HN10299	SPRING COLLER
90	CN31755	FEED PISTON STOP
91	KK23517	COMP. SPRING 3517
92	HH11106	O-RING AP16
93	HN10298	FEED PISTON
94	FF51613	HOLLOW PIN 1613
95	HN10754	CAUTION LABEL
96	HN10307	MAGAZINE CAP
97	FF41281	PIN 1281
98	KK33218	SPRING 3218
99	HN10306	MAGAZINE HOLDER
100	FF21101	V.S. PIN 3X12
101	HN10308	MAGAZINE HOOK
102	HN10737	MAGAZINE LOCK LEVER
103	HN10736	MAGAZINE
104	FF41599	PIN 1599 (REPLACES FF41587)
105	EE39609	RUBBER WASHER 1.8X6X2
106	BB71504	SCREW 6X35
107	HN10330	ATTACHMENT C UNIT
108	HN10211	DUST COVER
109	CN31083	HOOK, DUST COVER
110	CN30707	COLLAR
111	HN10501	GUIDE HOLDER
112	BB40436	HEX.BOLT 6 X 14
113	HN10502	NAIL NOSE GUIDE
114	HH11132	O-RING 1AP10A CN65072
115	HN10752	END CAP STEM
116	HN10753	NAIL NOSE GUIDE B
117	HN10757	TRIGGER LOCK SEAL
118	HN10758	CAUTION LABEL B
119	FF21229	W.S.PIN 3X20
201	HN81032	TRIGGER VALVE KIT
202	HN81033	O-RING KIT